

**A pioneering high school in southern England wanted to distinguish itself as a language learning institution that could offer its students “active involvement” in the classroom. The SANAKO Lab 300 made it happen.**

### ALDERMAN WHITE HIGH SCHOOL

- Located in Nottinghamshire
- Home of specialist Language College
- Student population of 650 pupils
- Languages offered – French, German, Spanish, Japanese and Urdu

### A School in Nottinghamshire

Alderman White High School is located just on the border of the City of Nottingham in the UK, and was the first High School in Nottinghamshire to develop a specialist Language College. The school currently has a total enrollment of some 650 pupils. The Language College offers courses in French, German, Spanish, Japanese, and has even started to offer classes in Urdu, in response to a perceived need in the community. Language training in these areas is administered by a core of 10 teachers, who are supplemented by other language teachers as needed.

### Building a First Class Language College

As a specialist language teaching institution, Alderman White would attract some funding for its equipment needs from the Department of Education, but this would not cover 100 % of its requirement for a new language lab. One solution that offered itself to Karsten Stephan, Director of the Language College, was to integrate a software solution onto the existing computer network.

### THE SANAKO SOLUTION

- SANAKO Lab 300 solution
- CSS software facilitates cross-curricular teaching
- Satellite feed offering video distribution
- High quality audio enhances language teaching

However, he quickly grasped that while this would be the more economical solution, the sound quality would suffer. “We wanted to set ourselves apart; we wanted to make a difference. When it comes to audio quality for language teaching, it’s critical,” he explained.

### Language Training and Cross-Curricular Teaching

Karsten Stephan and his staff of language teachers decided to purchase a Sanako Lab 300 system with CSS software. This configuration is designed specifically for language training, but also supports cross-curricular instruction. A satellite feed offers video distribution that can be recorded and stored for later use in a number of teacher- or student-led instruction exercises for the purposes of language training, or for any other subject. According to Stephan because language learning involves listening the sound quality delivered by the Sanako Lab 300 was a critical factor in the final choice.



*The sound quality provided by SANAKO Lab 300 was an important factor in the purchasing decision*



*Students have fun while learning.*



## EXCITEMENT FOR TEACHERS AND STUDENTS

- All students engaged in learning at the same time
- Teacher focuses on individuals or groups as needed
- Students can be creative, work independently and gain confidence
- Teachers can use new instruction tools
- Students develop listening skills

### Active Engagement, Active Learning

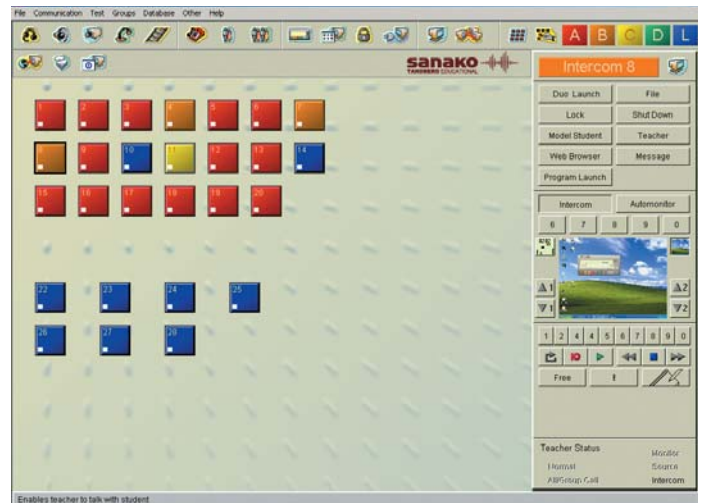
“Active engagement for all students in the class is at the heart of this system,” explained the Language College Director. According to Stephan, in a traditional classroom language teaching situation, only 2 people are usually engaged in language learning at the same time – the teacher and one student. The Sanako Lab 300 system now allows all students to concentrate on any one of a number of different learning exercises, while the teacher focuses attention on any student or group of students as needed.

Stephan also noted that this system provides the students with many opportunities to record work they are proud of. “At the end of the session whether it’s role play or conversation – they can save the work and enjoy listening as it’s played back to the class,” he said.

### Something to be Proud of

Apart from the Language College Director, other language teachers in the Language College all have given positive feedback about the new language lab. “Now that they are all comfortable with it, they feel that it gives the students more scope to be creative, to practice independently, and to build their confidence” Stephan said. He also noted that the system helps the students to develop their listening skills, which lie at the heart of language learning.

Teachers at the Alderman White High School and Language College have also been excited by the number of instruction tools the new system offers them. “They now have the ability to see and show their students’ screens, or they can use a PowerPoint presentation, we can use the weather forecasts, there are many possibilities for group work,” explained Stephan.



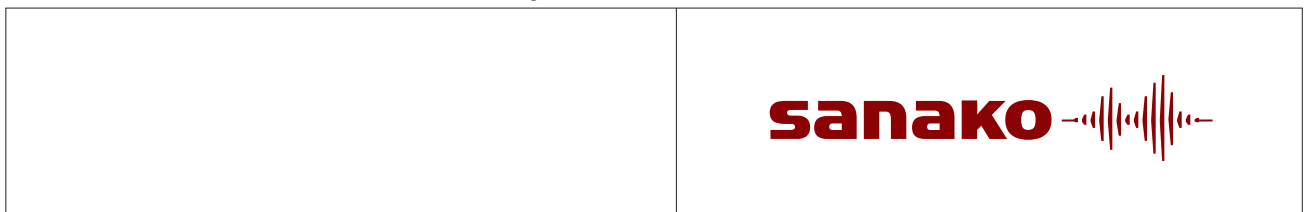
SANAKO Lab 300 Teacher Software.

SANAKO in the UK:

### SANAKO UK & Ireland

Beech House, Woodland Park  
Bradford Road, Bradford, West Yorkshire, BD19 6BW  
T: 01274 863 380, F: 01274 863 381  
ukenquiries@sanako.com, www.sanako.co.uk

For additional information contact your reseller or visit our website at [www.sanako.com](http://www.sanako.com).



SANAKO products are designed and manufactured in Finland.

**sanako**

1861070-4119

SANAKO Corporation, Kaurakatu 46, P.O. Box 41,  
FI-20741 Turku, FINLAND, info@sanako.com, www.sanako.com  
SANAKO User Club and Community: <http://members.sanako.com>